

Bonnington House



Property Type **House**

Sleeps **9**

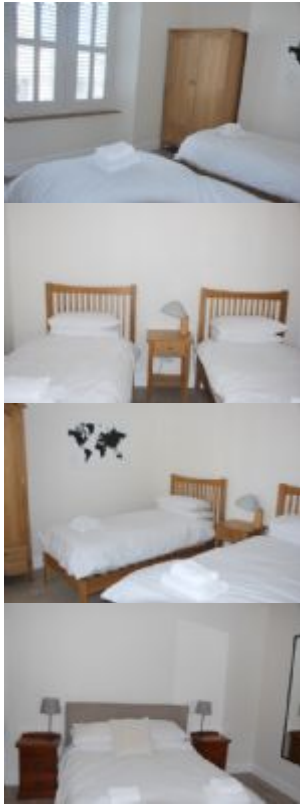
Change over **Flexible**

Short Breaks **Available**

This property has recently been renovated to a very high standard, providing contemporary living accommodation right in the heart of Elie. Call for more details.







The accommodation

Ground Floor

Kitchen

Rangemaster (dual fuel) - Lamone microwave - under worktop fridge (another in utility room) - dishwasher - Nespresso Krups coffee machine (please provide own pods) - dining table (seating 10) - TV

Living Room

TV (Freesat) - DVD player - seating - small glass table (x2 chairs) - patio doors accessing enclosed patio

Patio (fully enclosed)

Patio - table/chairs (6x) - Webber charcoal BBQ

Bathroom

Bath - Shower over bath - WC - Double WHB's - Bidet

Separate WC

WC - WHB

Utility Room

Large half fridge/half freezer - washing machine - tumble dryer - Wifi router

Large storage room (in house with lockable street access)

To store bikes/golf clubs/beach items etc

Halfway Upstairs

Shower Room

Shower - WC - WHB

First Floor

Double Bedroom

Double bed - glass door to sun room - access to roof top seating

Roof Top Seating

Rattan seating/table - sea views

Double Bedroom

King sized bed

Twin Bedroom

2 single beds

Bunk Bedroom

Set of adult-sized bunk beds - pull out bed (please ask for bedding if you request this)